

February 2012

Issue 112

ISBN: 1324 2822

FREE



# Artspeak

Arts and cultural news from the NSW Central West

Arts OutWest promotes, facilitates, educates and advocates for arts and cultural development for communities of Central West NSW  
BATHURST • BLAYNEY • CABONNE • COWRA • FORBES • LACHLAN • LITHGOW • OBERON • ORANGE • PARKES • WEDDIN • WELLINGTON



## The Screen Issue

Whilst the next generation of screen content makers got busy with video cameras at Arts OutWest's Summer Film Club workshops, the region's support service for the professional end of the screen industry prepares to officially launch their new brand, new website and new directions. Screen Central has replaced what was Film Central and is a preproduction resource for those making screen productions in the Central NSW, the Blue Mountains and Western Sydney regions (see details page 3). Inside this month's Artspeak read why you should think about coming to the Screen Central launch. There's also arts and cultural news from across the region, six pages of new events to get out and enjoy, plus lots of workshops and other opportunities for arts practitioners and lovers of all kinds.

IMAGE: Charlotte Simpson, Josh Barber and Kate Robinson and tutor Ryan Fitch at Arts OutWest's school holiday film making in Grenfell. Photo: Carly Brown.. More pictures on page 4.

Also inside...

- Arts OutWest projects
- Local arts news
- 6 pages of events
- Workshops
- Funding opportunities
- Opportunities for artists

## Arts OutWest Inc

Servicing the Central West since 1974

Phone: (02) 6338 4657

Fax: (02) 6338 4646

Email: [artsoutwest@csu.edu.au](mailto:artsoutwest@csu.edu.au)

PO Box 8272 CSU LPO

Bathurst NSW 2795

[www.artsoutwest.org.au](http://www.artsoutwest.org.au)

## AOW STAFF

Executive Officer | Tracey Callinan  
Communications | Maryanne Jaques  
Central West Aboriginal Arts  
Development Officer | Aleshia Lonsdale  
Finance (PT) | Ian Kirkby  
Arts & Health Coordinator (PT) |  
Christine McMillian  
Youth Development (PT) | Zoe Rodwell

## BOARD MEMBERS

Libby Oldham - general m'ship | Chair  
Cr Sharon Wilcox - Cabonne | Vice Chair  
Cr Monica Morse - Bathurst | Secretary  
Toni Dwyer - general m'ship | Treasurer  
Heather Blackley - Lachlan  
Fran Charge - Oberon  
Cr Graham Falconer - Forbes  
Brian Langer - Cowra  
Cr Chris Lobb - Weddin  
Suzanne Lollback - Lithgow  
Elizabeth Matthews - Parkes  
Kath McGeechan - general membership  
Dr Jane Mills - CSU  
Cr Roxanne Reeks - Blayney  
Alan Sisley - Orange  
Su Williams - Wellington

## ARTS OUTWEST IS SUPPORTED BY

Arts NSW; Local councils of Central West NSW: Bathurst Regional, Blayney, Cabonne, Cowra, Forbes, Lachlan, Lithgow, Oberon, Orange, Parkes, Weddin and Wellington; and Charles Sturt University.

## MEMBERSHIP

Join Arts OutWest. Individual member \$20, Organisation \$30 per annum. Annual membership Jan - Dec.

## CONTENT DEADLINES

Artspeak | 15th of the month  
Website, radio etc | two weeks prior

## THANKYOU

Thank you to the media agencies who assist Arts OutWest to promote arts events, in particular: ABC Central West, 2BS, 2MCE, 2PK, 2LT, PHFM, 2LVR, 2EL, 2GZ, Cowra Community News, Fairfax/ Rural Press, local independent media, imag, Blue Mountains Life, WIN News, Prime7 news.

## YOUR FEEDBACK

We want you to receive the best service. Please forward any comments.

## FROM THE EXECUTIVE OFFICER

### 2012 began with a busy start for Arts OutWest with a series of workshops for young people in various locations across the region.

Now as the year starts settling into some sort of routine, Arts OutWest have a number of developments that we are working on including a consultation process that will lead to our next strategic plan, the negotiation of new agreements with our 12 councils beyond 2012, and a review of our constitution.

Arts OutWest has been operating on a strategic plan that was developed to cover the period 2008 -2012. It is time now to start developing our next plan to take us through the next years. To do this we will be conducting a consultation process that will offer surveys and online consultation as well as face-to-face sessions in a number of locations, to ensure that we are aware of our users' and stakeholders' needs. The resulting plan will endeavour to respond to these needs while articulating an overall vision for what we aim to achieve strategically. Currently we have set our priority areas as Aboriginal arts development, arts and health, creative industries and young people, and the selection of these focus areas is one of the points of discussion with which we would like to engage.

Over January we have also been checking our constitution to check that it is consistent with some of the changes that have occurred in association legislation, ensuring that our constitution remains effective and appropriate. One of the issues we have been investigating is membership. Currently there are two categories of membership: council membership is one type; the other is the paid membership of individuals, organisations and associate members. All individuals and organisations in our region are entitled to our services regardless of whether or not they are members, providing their council is a contributing member. We have therefore been investigating the effectiveness of the additional categories of membership. Membership is currently very cheap for individuals and organisations (\$20/\$30), a fee which doesn't even cover the costs of printing and posting out the hard copy of our Artspeak newsletter which membership entitles you to. However, membership also entitles you to a voice in our organisation through voting rights at the AGM as well as the right to stand for election on our Management Committee. We will also offer discount rates in 2012 to members attending our professional development courses. Again, we are happy to hear from those that use our services about what is most effective for you, and any constitutional changes can only be made through the voting by the membership.

The start of a new year is always a time for planning and looking to the future. We look forward to working to develop our arts and cultural activities across of our region in 2012.

Tracey Callinan, Executive Officer

## MEMBERSHIP

### Reminder: 2012 memberships due

**Annual Arts OutWest financial membership fees (2012) are now due.**

Membership is \$30 organisations, \$20 individuals.

Learn more about AOW membership and download an application form at:  
[www.artsoutwest.org.au/about/membership.php](http://www.artsoutwest.org.au/about/membership.php)

**DISCLAIMER** Articles appearing in Artspeak which are attributed to individuals do not necessarily express the views of Arts OutWest. All content, including event listing details, is sourced from the community and reprinted here and online in good faith. Arts OutWest accepts no responsibility for date, price, content or venue changes, or cancellation of events. Arts OutWest reserves the right to edit or omit contributions.

## CREATIVE INDUSTRIES

### Screen Central official launch

**Tuesday February 21, 5.30pm - The Hub, Keppel Street Bathurst**

Screen Central provides the feature film, television dramas/documentaries, TV commercial, music video, corporate film and photographic communities with preproduction resource to plan shoots in the Central NSW, the Blue Mountains and Western Sydney regions.

The launch event is a chance for screen practitioners to let Screen Central know about their professional development needs; an opportunity to share some of the content already coming out of our region; and an opportunity to find out about the services offered by Screen Central. People with locations that would also be good for filming/ production are also invited to attend.

RSVP to Kate Barker at CENTROC on 02 6331 9246 or email

[kate.barker@centroc.com.au](mailto:kate.barker@centroc.com.au)

More about Screen Central at: [screencentral.com.au](http://screencentral.com.au)



## YOUNG PEOPLE

### Summer Film Clubs

**Arts OutWest sent young film makers out into the region to run a hectic three weeks of Summer Film Club sessions with young people aged 12-25.** The three hour, twice weekly sessions in Cowra, Forbes, Blayney, Orange and Molong were focussed on making short films with basic film equipment in a short turn around. The project was part of Arts OutWest's lengthy youth media program (which we're calling 'YAOW!').

With tutors Ben Morris and Andy Cavenagh, Summer Film Club participants worked on storyboarding, shot composition, directing and filming skills. Around 25 short documentaries, new stories, quirky comedies and stop motion animation films were made. They also, we should say, had lots of fun. A dedicated YAOW! website will be launched in February showcasing these works and other multi-media, music and digital design work by young people from the Central West and offering regular 'briefs' – artistic challenges for young multi-media artists to complete.

In the meantime, see completed films at [www.youtube.com/artsoutwest](http://www.youtube.com/artsoutwest)

This project was funded by Arts NSW with support (including the loan of media equipment and vehicles) from Charles Sturt University.

## YOUNG PEOPLE

### Grenfell ArtStart

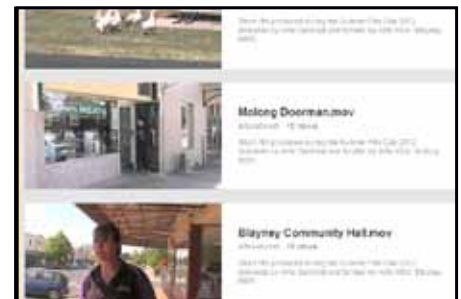
**The biennial TAFE ArtStart program wrapped up in the central west with an intensive four days of street theatre and film making workshops in the town of Grenfell.** Keen to develop more home grown theatre and street performance for the annual Henry Lawson Festival of Arts, the local community brought in Arts OutWest to coordinate workshops for young people.

Over four days of school holidays the mornings were spent learning circus skills, parading, outdoor performance and acting and the afternoons on film making. With the involvement of Grenfell Dramatic Society and AOW tutors Ryan Fitch, Bek Kordos and Jess Collins, a short, rhyming street performance was created - a showdown between historic figures Granville Grenfell and Frank Gardiner - performed in the main street of town. Keep an eye of for a repeat performance and lots of new roving entertainment during the June long weekend festival.

This project was funded through TAFE and through Arts NSW, coordinated by Arts OutWest with support from Charles Sturt University.

See footage and great pictures from the week at:

[www.facebook.com/grenfellfestival](http://www.facebook.com/grenfellfestival)



### See the youth projects online

View Summer Film Club videos:  
[www.youtube.com/artsoutwest](http://www.youtube.com/artsoutwest)

Pics from the Grenfell workshops:  
[www.facebook.com/grenfellfestival](http://www.facebook.com/grenfellfestival)

More updates and photos  
[www.facebook.com/artsoutwest](http://www.facebook.com/artsoutwest)

coming soon  
[www.yaow.com.au](http://www.yaow.com.au)

## ARTS MEDIA

### Arts Sunday

**Don't forget to head online on the first Sunday of the month (February 5 and March 4) for the 'Arts Sunday' feature at local Fairfax/ Rural Press papers.**

We're always on the lookout for stories, photo galleries from recent arts events, artist profiles and local writers keen on putting together a story or two. These stories are read far and wide. Contact Maryanne on 6338 4657. See: [www.artsoutwest.org.au/news/Arts\\_Sunday.php](http://www.artsoutwest.org.au/news/Arts_Sunday.php)

## IN PICTURES

### Pictures from the Grenfell ArtStart workshops



Above: Grenfell ArtStart street theatre and film making workshops. From video work to stop motion claymation and a lively performance in the main street of Grenfell. The workshops ran over four days January 17-20, 2012.

Photos: Carly Brown. See more at: [www.facebook.com/grenfellfestival](http://www.facebook.com/grenfellfestival)

## FUNDING

### Country Arts Support Program 2012 closes February 10

**Applications for the annual Country Arts Support Program (CASP) closes on February 10.**

Community and arts groups with arts projects in mind should think about applying.

The State Government's Country Arts Support Program (CASP) provides small grants for small locally initiated arts projects. CASP grants are for small amounts of money - typically \$500 to \$1500 - and are available primarily to cover professional artist fees, travel and accommodation. Groups in Central West NSW wishing to

apply for the funding should read the guidelines carefully and must discuss their project with Arts OutWest before submitting an application.

Download the funding criteria from [www.regionalartsnsw.com.au/grants/casp.html](http://www.regionalartsnsw.com.au/grants/casp.html)

and contact Arts OutWest on 02 6338 4657 or email [artsoutwest@csu.edu.au](mailto:artsoutwest@csu.edu.au)

**Closing date 10 February 2012 For projects occurring between April 9, 2012 and April 7, 2013.**

## Local Arts News

---

### NATIONAL YEAR OF READING 2012

#### Library and literature lovers celebrate

**February 14 is Library Lovers Day. Yes, forget commercial sentiments, this is the day to head into your local library and show it some love.** 2012 is also the National Year of Reading so expect to see lots of extra literature based events on around the region coming up. This year the Jane Austen Book Club returns to libraries in the Central West Libraries network, joined by a new Recipe Club all about cook books, the usual Classics Book Clubs plus other talks, launches and events during the year. Most libraries also run weekly story time sessions for preschool aged kids and their families. Keen writers are always welcome at the Central West Writers

Centre drop in days (last Friday of the month, 2-4pm at Orange Library). Local Stages at BMEC in Bathurst also hosts a bimonthly play writing group (next is February 20, contact Kylie 6333 6144).

In this month's Whats On section of Artspeak find info about local a book launch, a publishing workshop with the Australian Society of Authors, a talk by a food writer and a poetry performance night. All year we'll keep you up to date with National Year of Reading events around the region.

You should also subscribe to Central West Writers Centre's excellent blog via: [www.wordsoutwest.com.au](http://www.wordsoutwest.com.au)

#### Cowra exhibition grant

**Cowra Regional Art Gallery is one of ten regional galleries across the state to receive a 2012 Incoming Touring Exhibition Grant (ITEG).** The Incoming Touring Exhibition Grant (ITEG) provides financial assistance to public galleries, craft and design centres throughout NSW for costs associated with the presentation of touring exhibitions and related public programs. The program is funded by Arts NSW and managed by M&G NSW. Cowra Regional Art Gallery will present the exhibition Form, Fire & Fruition - Geoff Crispin: A regional practice in clay.

#### Regional Youth Art Awards

**Winners announced in the 2011 Regional Student Youth Art Exhibition and Awards were announced at Cowra Regional Art Gallery in December.**

For the full story and list of winners go to:

[www.artsoutwest.org.au/news/local\\_news\\_archive.php](http://www.artsoutwest.org.au/news/local_news_archive.php)

#### Indent funding for Cowra concert

**The Cowra Youth Council has secured a \$2,500 Indent grant to assist in staging the 2012 Home Grown concert for young local bands and solo artists during Youth Week this year.**

Now in its third year, Home Grown gives local artists the opportunity to perform to a live audience with a wide variety of genres represented, including country, pop, progressive rock, acoustic and heavy metal/grunge. The concert is an all ages, drug and alcohol free music event. Home Grown 2012 promises to be even bigger and better, with the Cowra Youth Council working alongside fellow Indent grant recipients from the Youth of Bland Shire in West Wyalong to include a headline band in the line-up this year.

"We plan to close off the street outside the Civic Centre and have other entertainment, street stalls and street theatre running in the lead up to the concert. It's going to be a fantastic night, so we'd encourage all young local musicians to give it a go and start rehearsing," said the concert team leader and Youth Council member Dylan Oliver.

More details at: [www.cowraregion.com.au/home/4476/MR-GRANTANNOUNCE-2012FINAL.pdf](http://www.cowraregion.com.au/home/4476/MR-GRANTANNOUNCE-2012FINAL.pdf)

## Jump mentorship

**Bathurst-based theatre director Adam Deusien has been named a recipient of the 2012 JUMP National Mentoring Program.**

Over the next ten months, Adam, and the other 75 artists selected from across the country, will work with respected arts professionals to advance their careers and make their mark on the Australian arts industry.

Adam will be mentored by Yana Taylor who has an extensive background as a director, choreographer, writer, performer, researcher and educator. Local audiences will recognise Yana from her onstage work with theatre company Version 1.0 (in *Deeply Offensive and Utterly Untrue* and in the 2011 work developed in Bathurst, *The Disappearances Project*).

Yana will mentor Adam in the development of a new theatre project *Right Behind You*, a new verbatim theatre piece based on the ancient Greek myth of Orpheus and Eurydice.

Adam has a BA Theatre/ Media and a Master of Arts Practice from CSU Bathurst. He is currently directing *Windows on the World* for Local Stages at BMEC (see story below) and working with choreographer Alison Plevy on a dance-theatre work *Syn-thesis*, also through Local Stages.

Funded by the Australia Council for the Arts, JUMP identifies and promotes excellence in artistic practice. All 2012 JUMP artists will commence their mentoring journeys on 7 - 9 February when they will participate in induction events around the country.

**Learn more about JUMP at [www.jumpmentoring.com.au](http://www.jumpmentoring.com.au)**

## Windows on the world

**The latest production from the Local Stages program at Bathurst Memorial Entertainment Centre will be a full, professional staging of Colette F Keen's verbatim theatre work *Windows on the World* this month.**

The play has been in development at Local Stages for the past two years. This has involved a number of public readings before the play was chosen by Noah Wile's Blank Theatre Company in Los Angeles to open their season on September 12, 2011.

A one-act play, *Windows on the World* presents interviews of those affected by the 9/11 terrorist attack in New York City.

The local production will play at BMEC February 24 and 25.

In the September 2011 issue of Arts Sunday Arts OutWest profiled the play and the reading in the US. Read the story and interview with Colette in our local news archive at

**[www.artsoutwest.org.au/news/local\\_news\\_archive.php](http://www.artsoutwest.org.au/news/local_news_archive.php)**

## Cowra Art Group ask 'Where are they now?'

**2012 will be the 50th year of continuous operation for the Cowra Art Group.** They are calling for past members to get in contact and be a part of the Anniversary celebrations planned for October 20. They are looking for memorabilia, photos or stories of personalities/events - anything or anyone that has helped in any way to shape the last 50 years of what is now a vibrant organisation. Please contact Cowra Art Group Inc at PO Box 236, Cowra 2794 or call Gwen Clark on 02 6342 3995



## Kalari People's Choice

**Over the last two months visitors to the Kalari Cellar Door and Art Gallery in Cowra have enjoyed voting for their favourite painting from a display by Central West artists.** This was the 13th year that this exhibition has been held and was won by the very popular artist Bev Lappan from Grenfell with her painting of 'Tall Gums', delicately executed in pastel (*pictured above*).

## Kalari Lachlan River Arts Festival plans

**Forbes Shire Council has pledged to support the second running of the Kalari-Lachlan River Arts Festival, planned for 2013.**

Whilst the council have not yet confirmed a specific contribution towards the festival, Forbes Shire Council's General Manager Carissa Bywater told the Forbes Advocate that the feeling following a debrief presentation, made by festival coordinator Merrill Findlay to council in December, was "very positive".

Support from council is expected to include maintenance and supervision of toilets, installation of mains power to festival sites and marketing services.

More about the 2011 festival at:

**<http://riverartsfestival.org.au/>**

### WEB TIP:

There's always lots more news than can fit on these pages, updated as it happens, as it comes in, online under the 'local news' link.

# What's On | February 2012

A selection of new events from the Central West NSW regional cultural calendar  
Also look at events around the region at: [www.artsoutwest.org.au/whats\\_on/](http://www.artsoutwest.org.au/whats_on/)

Arts and cultural events in Central West NSW.  
Listed within event type, then by Local Government Area.



## February Highlight

### The Archibald Prize



**20 January to 26 February 2012**  
**Orange Regional Gallery, Byng Street Orange**  
**Tuesday-Saturday, 10am-5pm, Sundays 12-4pm**

02 6393 8136 - [www.org.nsw.gov.au](http://www.org.nsw.gov.au)  
The ever popular and controversial portraiture competition touring from the Art Gallery of New South Wales.  
Entry: \$4 / \$3 FORG members and pensioners.  
Children free.

*Image: Hugo Weaving by Nicholas Harding.*

## Exhibitions

### BATHURST REGION

**Bathurst Regional Art Gallery**  
**70-78 Keppel Street Bathurst**  
02 6333 6555  
[www.bathurstart.com.au](http://www.bathurstart.com.au)  
Opening: \$8/ \$6 BRAGS.  
Exhibitions free  
Tuesday - Saturday 10am-5pm.  
Sunday and P.Hols 11am-2pm



**All until 11 March**  
**Technique: Contemporary Australian Jewellery**

This exhibition explores how techniques drawn from the diverse training of Cesar Cueva, Pennie Jagiello, Cinnamon Lee, Sabine Pagan, and Blanche Tilden inform their contemporary jewellery practices. A BRAG and Metalab partnership project Curated by Nina Cueva .

**Hyperclay: Contemporary Ceramics**

A provocative and engaging exhibition of work by eight Australian artists who use clay in unexpected and surprising ways: Walter Auer, Roderick Bamford, Stephen Bird, Jacqueline Clayton, Andrea Hylands, Addison Marshall, Pip McManus and Paul Wood.

**Locust Jones: Some Mistakes Were Perhaps Made**

Locust Jones' large scale drawings are influenced by travel, global events, and his participation in the Hill End Artists in Residence Program in 2011. A BRAG Hill End Artists in Residence Program exhibition.

*Image: Blanche Tilden Graded Palais necklace, Oxidised 925 silver, borosilicate glass, 280mm diameter x 12mm.*  
*Photo: John Lee.*

### BATHURST REGION



**Bathurst Art Trail**  
**First weekend of the month, February 4 and 5**

Up to 30 artists exhibiting in studios and gallery spaces. Pick up a map and list at Bathurst Visitor Information Centre.

*Image: Katrina Daly at her shearing shed gallery at Napoleon Reef, east of Bathurst.*  
*Photo: Arts OutWest.*

**Bathurst Aboriginal Community Art Exhibition**  
**Until 8 February**

In the Foyer of the Bathurst Health Service Howick Street, Bathurst. This exhibition celebrates the work of local Aboriginal Artists. Part of the Bathurst Arts and Health Program.  
Bathurst Health Service  
Howick Street Bathurst

**Class Art Studio**  
**By Appointment**

For original and regional paintings, prints and cards and gift vouchers. Art classes for beginners and others starts Feb. Day, evening and Sat. workshops. Small groups or private.  
Kay Chapman - Artist and teacher.  
Class Art Studio  
309 Stewart St Bathurst  
0427 351 260 / 02 6331 4022  
[kchapmanclassart@oneseniors.com.au](mailto:kchapmanclassart@oneseniors.com.au)

**Fox's Furniture and Woodwork Gallery**  
**108 William Street Bathurst**  
02 6331 8699  
Mon-Fri 9.30am-5pm, Sat 9.30am-3pm & Sun 10am-2pm  
Closed Tuesdays

**Rankin Cottage Crafts**  
**117-121 Rankin St (opposite Bathurst RSL) Bathurst**  
02 6331 4351

# What's On | February 2012

A selection of new events from the Central West NSW regional cultural calendar  
Also look at events around the region at: [www.artsoutwest.org.au/whats\\_on/](http://www.artsoutwest.org.au/whats_on/)

## Exhibitions

### BLAYNEY SHIRE

#### Ada's Place

Open Wed-Sat 9am-5pm

Ada's landscapes and pottery. The gallery also sells prints, pottery, jewellery and other gifts. Ada's Place  
5 William St Milthorpe  
02 6366 310

#### Stringybark Craft Cottage

Open Afternoons every Weekend.

Stringybark Craft  
Next to the Gladstone Hotel  
Newbridge

#### Carcoar Pottery

Weekends / Public Holidays  
10.30am to 4pm & by request

Carcoar Pottery  
Historic Court House Carcoar  
02 6367 4155

### CABONNE SHIRE

#### Jayes Gallery

31 Gidley Street Molong  
02 6366 9093

gallery@jayes.com.au  
Wed - Sun 10am - 4pm  
[www.jayesgallery.blogspot.com](http://www.jayesgallery.blogspot.com)



#### Beyond the Great Divide 25 February - 25 March

'Beyond the Great Divide' by Julie Williams, Sculpture from Hui Selwood.

Image: work by Julie Williams.

#### River Bank Gallery

71 Gaskill Street Canowindra  
02 63442778

Thursday-Sunday 10am-4.30pm  
info@riverbankgallery.com.au

#### Sibling Rivalry Opens February 4.

Runs to end of the month.  
Joedie Davis and Jay Davis.

#### Waking Up the Innocent Opens March 3.

Runs to end of the month.  
Carissa Ramsay.

### CABONNE SHIRE

#### Manildra Craft Cottage

Tuesday-Sunday, 10am-2pm

Paintings, pottery, ceramics, knitwear, doll's clothes, jams. 65 Kew Street, Manildra.  
02 6364 5033.

#### Yeoval Craft Room

Wednesday-Sunday, 10am-2pm

Quilts, embroidery, gifts, supplies, knitting, jewellery. 39 Forbes St, Yeoval  
Lyn 0417 364 409  
Cindy 0427 464 092

#### Molong & District Service Men & Service Women's Portrait Gallery

Open everyday after 2pm or by appointment

Portraits by local artist Ann Marie Ingham.  
Molong RSL Club  
22-24 Riddell Street Molong  
02 6366 8105

#### The Yarn Market Bank St Molong

7 days, 10am-4.30pm  
02 6366 8260 (bus. hours)

Locally made crafts of all kinds including woodwork, toys, knits, beanies, patchwork, jewellery.

### COWRA

#### Kalari Art Gallery

120 Carro Park Road Cowra  
[www.kalariwines.com.au](http://www.kalariwines.com.au)  
02 6342 1465

Friday, Saturday, Sunday and Monday 10am-5pm  
Gallery and cellar door

#### Operation Art

Until 10 February

During library hours.

An initiative of the Children's Hospital at Westmead in collaboration with the Department of Education and Communities. Cowra Library, Cowra

### COWRA

#### Cowra Regional Art Gallery

77 Darling St Cowra  
02 6340 2190

[cowraartgallery.com.au](http://cowraartgallery.com.au)  
[www.cowraartgallery.com.au](mailto:www.cowraartgallery.com.au)  
Tuesday-Saturday 10am-4pm,  
Sunday 2pm-4pm

Closed Saturday 24 December  
to Tuesday 3 January  
Free admission



#### 2011 CCP Documentary Photography Award

4 February to 11 March

A biennial showcase of contemporary Australian documentary photography. It demonstrates the breadth of contemporary approaches to documentary practice from traditional black and white narratives through to vibrant colour, all of which have been achieved without digital manipulation. The Judges for 2011 were Dr Isobel Crombie, Senior Curator, Photography, National Gallery of Victoria and renowned artist Bill Henson.

#### Olive Cotton: Photographs 4 February to 11 March

Olive Cotton photographs from the Cowra Regional Art Gallery Collection and works on loan from the Josef Lebovic Gallery, Sydney. The exhibition includes significant photographs that highlight Olive Cotton's love of nature, her astute powers of observation, as well as her enduring interest in the play of light. Olive Cotton lived and worked in the Cowra district for more than 50 years.

Image: Olive Cotton Interior c 1926/2001. Silver gelatin photograph 13.9 x 20.2 cm. Collection Cowra Regional Art Gallery. Donation by The McInerney Family 2007. Courtesy Josef Lebovic Gallery.

### LITHGOW REGION

#### Lithgow Craft Co-Op Sweetbriar House Great Western Highway Lithgow

10am-4pm daily  
[sweetbriarcraft@yahoo.com](mailto:sweetbriarcraft@yahoo.com)  
02 63523541  
[lithgowcraftco-op.yolasite.com](http://lithgowcraftco-op.yolasite.com)

#### Captured Craft

Every weekend and public holiday from 9-5pm

Aboriginal Art, pottery, woodwork, leather work, hand made items of all kinds and much more. Lithgow Correctional Centre, Great Western Highway, Lithgow.

#### Talisman Gallery 2360 Great Western Highway Little Hartley

02 6355 2056  
[www.talismangallery.com.au](http://www.talismangallery.com.au)  
Metal sculpture gallery displays a permanent exhibition of the work of renowned metal sculpture artist, Ron Fitzpatrick.

#### Old Wallerawang Station

Open 7 days  
Paintings, ceramics, glass, jewellery and crafts.

### OBERON

#### Cobweb Craft Shop

Open 7 days a week

Oberon St, Oberon  
02 6336 1895

#### Potters Needs

75 Curtis Street Oberon

02 6336 0411  
[www.pottersneeds.com.au](http://www.pottersneeds.com.au)  
info@pottersneeds.com.au  
Saturday, Sunday 10am - 4pm  
Gallery and potters supplies

### ORANGE

#### Park Guildry Cook Park, Summer Street Orange

02 6362 5850  
7 days, 10am-4pm  
Among the handcrafted goods sold are knitting, sewing, pottery, woodwork, lead light, painting, leather work, jewellery.

# What's On | February 2012

A selection of new events from the Central West NSW regional cultural calendar  
For regularly updated listings of classes, courses and workshops go to: [www.artsoutwest.org.au/training/central\\_west\\_training.php](http://www.artsoutwest.org.au/training/central_west_training.php)

## Exhibitions

### ORANGE

**Orange Regional Gallery**  
Byng Street Orange  
02 6393 8136  
Tues-Sat, 10am-5pm  
Sundays 12-4pm  
[www.org.nsw.gov.au](http://www.org.nsw.gov.au)



**Venture into Physics**  
Until February 19  
Bob Baker Jennifer Hawkins  
Karen Macpherson. Three  
contemporary artists respond  
to some of the amazing  
conundrums of theoretical  
physics. Free.

**Vario Print Exchange**  
Until February 19  
An international exchange of  
work between printmakers  
from New South Wales,  
Queensland, Hawaii and Wales  
encompassing the full range of  
print techniques from  
traditional etchings to cutting  
edge digital images. Free.

**The Archibald Prize**  
Until February 26  
\$4/ \$3 FORG members,  
pensioners. Kids free.

**Quiet Connections**  
Until April 1  
Ros Auld, Carmen Ky and  
Tracey Luff have very different  
art practices and live in diverse  
country environments. They  
have come together with  
work individually inspired by  
the dynamic forces of the  
natural world and their own  
contemplative process. Free.

**Mary Turner Collection**  
Until April 1  
An exhibition of Australian  
modern masters gifted to  
Orange Regional Gallery  
by Mary Turner OAM. The  
collection includes works by  
Sidney Nolan, Roland Wakelin  
and Ian Fairweather. Free.

*Image: Installation by Jennifer  
Hawkins, paintings by Bob  
Baker and polymer sculptures  
by Karen Macpherson.*

### PARKES

**Bogan Gate Railway Arts  
and Crafts Centre**  
Saturday and Sunday,  
10am - 4.30pm  
Devonshire Teas available for  
only \$4. Free admission

**Craft Corner**  
20-22 Dalton Street Parkes  
Monday-Friday 9.30am-4.30pm  
Saturday 9.30am-2pm

**Peak Hill Country Crafts &  
Visitor Information Centre**  
Open daily 9.30am to 4.30pm  
Ray Merton art collection,  
pottery, gifts, cooking, tea/  
coffee. Visitor Information.

### WEDDIN SHIRE

**Wallangreen Sculpture  
Gallery and Garden**  
By appointment, 10am-4pm  
There are nearly 200 sculptures  
displayed. Tours available.  
\$4 Adults/ kids free  
Wallangreen Sculpture Garden  
and Gallery, Cnr Fitch's Lane &  
Melyra St, Grenfell  
[grenfell.org.au/wallangreen](http://grenfell.org.au/wallangreen)  
Jan or Len 02 6343 1707 or  
0427317902  
[fitchs@bigpond.net.au](mailto:fitchs@bigpond.net.au)

**Grenfell Art Gallery**  
Main Street Grenfell  
02 6343 1864  
[gallery@grenfell.org.au](mailto:gallery@grenfell.org.au)  
Tuesday-Saturday 10am-5pm

**Local Dreams**  
Until 25 February  
An exhibition of recent works  
by local artists. It also includes  
sculptures from recycled  
material by Len Wallace and  
Kathleen McUe.  
The magnificent Grenfell Curtin,  
which depicts the history of the  
Weddin Shire, is also on display.  
Free.

## Live Music & Performance

### BATHURST REGION

**Bathurst Memorial  
Entertainment Centre**  
105 William Street Bathurst  
02 6333 6161  
[www.bmec.com.au](http://www.bmec.com.au)

**Wattle Foyer Soiree**  
Tuesday February 14, 6pm  
Presented by Local Stages .  
Open mic night. Bring along  
your performance in progress.  
FREE.



**Windows on the World**  
Friday February 24 &  
Saturday February 25  
Presented by Local Stages.  
A verbatim theatre work by  
Colette F Keen about the 911  
attack on New York.

**Bathurst RSL**  
Rankin St Bathurst  
02 6332 3999



**Bathurst Jazz Club**  
3rd Sunday of the month,  
2-6pm  
[www.facebook.com/  
bathurstjazzclub](http://www.facebook.com/bathurstjazzclub)

### BATHURST REGION

**Valentines Day Soiree**  
Sunday February 12, 3pm  
Tuesday February 14, 7.30pm  
Some of the world's most beautiful  
music has been written for the  
classic combination of violin and  
piano. Local duo, Sarah Coghlan  
(violin) and Cindy Fox (piano)  
will entertain audiences with a  
relaxing and charming concert of  
music. Elgar's often overlooked  
Sonata, opus 82, the fantasy of  
Franck's Sonata in A major and  
the sublime beauty of Faure's  
Sonata, opus 13. Tuesday \$35  
includes wine, antipasti, cheese  
and dessert. Sunday \$20 adults,  
\$15 concession concert only  
Mitchell Conservatorium of Music,  
West Wing, Bathurst Court House  
Bathurst  
02 6331 6622

### CABONNE

**Taste Canowindra**  
Crn Ferguson and Tilga Sts  
Canowindra  
02 6344 2332  
[www.tastecanowindra.com.au](http://www.tastecanowindra.com.au)



**Fred Smith &  
Liz Frencham:**  
**Dust of Uruzgan Tour**  
Friday February 3, 7.30pm  
Fred is touring with double  
bassist Liz Frencham to present  
songs from his new album.  
Smith played regular concerts  
on the main base in Tarin  
Kowt where his songs are on  
everybody's iPod.  
"This remarkable singer-  
songwriter...keeps releasing  
amazingly accomplished  
albums." Bruce Elder (Sydney  
Morning Herald).

**Folk at Canowindra**  
Last Sunday of month, 4-6pm  
Acoustic music. Free.

# What's On | February 2012

A selection of new events from the Central West NSW regional cultural calendar  
Also look at events around the region at: [www.artsoutwest.org.au/whats\\_on/](http://www.artsoutwest.org.au/whats_on/)

## Live Music & Performance

### FORBES

**Forbes Services Club**  
02 6852 1488

**Howie Brothers Show**  
Monday February 13, 10am  
\$12 per person

### LITHGOW REGION

**10 Week Singer  
Songwriter Competition**  
8 weeks, Wednesday nights,  
starts February 8  
10 week singer songwriter comp  
\$2000 in prizes.  
\$20 entry fee.  
Court House Hotel  
1 Main Street Lithgow  
Leanne Hawkins 0413 346 139

**Sunday Afternoon  
Film Concert**  
Sunday February 26, 1.30pm  
Bobby Limb's 'Sound of Music'  
with added attraction of a live  
theatre organ concert. All will  
remember the popular TV series  
presented by Bobby Limb. This  
session will include a wide variety  
of music from pop, classical,  
opera, orchestra.  
Invitation only as seating limited to  
70 people - become a member of  
the society to get an invitation.  
Lithgow Valley Community  
Cinema  
16-18 Main Street Lithgow  
02 6353 1897

### OBERON



**Performance Poet  
Gregory North**  
Tuesday February 14, 6pm  
Presented by Friends of Oberon  
Library. Greg, known for his  
rendition of 'The Man From  
Snowy River' in 15 different  
accents, comes from the Blue  
Mountains. He has won a string  
of performance poetry awards  
including Australian Bush Poetry  
Champion in 2008, 2009 and  
again in 2010. In late 2006 Greg  
won his first award for written  
poetry – a first place in the  
Gippsland Wattle Bush Poetry  
Award. Greg has also competed  
four times at the National Poetry  
Slam.  
FREE, with gold coin donation to  
cover supper.  
Robert Hooper Community  
Centre,  
Fleming Street Oberon  
For catering purposes please  
RSVP to Kathy Sajowitz 6336-  
0742 or Celia Ravesi 6359 3109.

### OBERON

**Jenolan Caves**  
1300 76 33 11/ 02 6332 5888  
[www.jenolancaves.org.au](http://www.jenolancaves.org.au)



**David Scheel:  
Don't Shoot Me I'm the  
Piano Player!**  
Saturday February 11, 4pm  
A unique combination of  
classical piano and comedy.  
David Scheel's one-man show,  
the smash hit, Don't Shoot Me,  
I'm Only the Piano Player, has  
now been touring the world for  
15 years. Don't Shoot Me...  
sold out in London's West  
End, then at 3 consecutive  
Edinburgh Festivals.  
\$120 dinner and show.

**Underground Opera  
at Jenolan Caves**  
Friday February 17 and  
Saturday February 18, 8pm  
A unique experience. Feel the  
power and seduction of opera,  
as the Underground Opera  
Company presents immortal  
arias. Popular pieces from  
opera and light opera's finest  
moments - Carmen, Figaro,  
Cosi Fan Tutti, Les Miserables,  
My Fair Lady and Nessun  
Dorma from Turandot.  
Friday in the Lucas Cave.  
Saturday: The Grand Arch  
Valentines Concert. BYO  
picnics on Saturday.

**Georg Mertens:  
Bach to the Romantics**  
Saturday February 18, 4pm  
Includes optional short tour  
of the Cathedral Cave and  
complimentary wine and  
cheese in historic Caves  
House. \$65/38.

**Paganini Duo**  
Saturday February 25, 4pm  
Fiery music from the Romany  
Diaspora. \$65/38.

### ORANGE

**Orange Civic Theatre**  
Byng St Orange  
02 6393 8111



**John Waters: Looking  
Through A Glass Onion**  
Friday 3 February 8pm  
John Waters returns in his  
critically acclaimed production,  
a homage to the music, mystery  
and memory of John Lennon.  
On stage, with shadows from  
the lighting arrangement  
fluttering over his face as  
he explores the essence of  
the man through song and  
spoken word, Waters, becomes  
synonymous with Lennon.

**Justice Crew**  
Saturday 11 February 2pm  
After the success of the sold  
out 'Dance With Me LIVE' Tour  
in 2011, the incredible Justice  
Crew are back in 2012 with a  
brand new show, 'Sexy And You  
Know It'.

**Follow That Dream**  
Saturday 25 February 8pm  
A rocking musical theatre  
production that had critics and  
fans alike dancing in the aisles  
during its first US run. Max plays  
Elvis post-partum, reflecting on  
an extraordinary life - from his  
humble beginnings in Tupelo,  
Mississippi, to his excessive Las  
Vegas years.

**Namatjira**  
Friday March 2, 8pm  
Saturday March 3, 8pm  
A Big hART production, Created  
with the Namatjira Family  
starring Trevor Jamieson and  
Derik Lynch. The deeply moving  
story of Albert Namatjira.

# What's On | February 2012

A selection of new events from the Central West NSW regional cultural calendar  
For regularly updated listings of classes, courses and workshops go to: [www.artsoutwest.org.au/training/central\\_west\\_training.php](http://www.artsoutwest.org.au/training/central_west_training.php)

## Live Music

### ORANGE

**Music in the Gardens**  
**1 A Mixed Bouquet**  
Friday February 3, 6.30-8pm  
**2 Blossoming Ensembles**  
Friday February 10, 6.30-8pm  
**3 A Viennese Garden**  
Friday February 17, 6.30-8pm  
**4 Botanic Jazz**  
Friday February 24, 6.30-8pm  
Presented by Orange Regional Conservatorium.  
Tickets at the gate. Entry \$5, children under 16 Free.  
Orange Botanic Gardens  
Hill St Orange Orange

**City of Orange**  
**Brass Band Recital**  
Sunday 12 February, 1pm  
Free  
Cook Park, Orange

**Orange Jazz Club**  
**1st Sunday of month, 2-5pm**  
Live world class modern jazz!  
Royal Hotel Summer St Orange.  
see: [www.facebook.com/orangejazzclub](http://www.facebook.com/orangejazzclub)

## Festivals

**Oberon and Villages Simple Pleasures Summer Festival**  
**February 5-27, 2012**  
A chance for visitors to rediscover the simple pleasures of village life, sharing the lifestyle, history, culture, produce, secrets, stories and hospitality of the Oberon Circle of Villages, a part of The Tablelands Way experience. Details from Oberon Visitor Information Centre  
02 63298210

## Film Screenings

### BATHURST REGION

**21st Flickerfest**  
**International Short Film Festival**  
**Saturday March 3, sessions 5.30pm and 8pm**  
Best of Australian Shorts Program 5.30pm; followed by Festival Drinks. International Shorts Program 8pm. (15+)  
[www.flickerfest.com.au](http://www.flickerfest.com.au)  
18 for one session or \$30 for both  
Bathurst Memorial Entertainment Centre  
105 William Street Bathurst  
Info BMEC: 02 6333 6161

### LITHGOW REGION

**Lithgow Valley Community Cinema**  
**16-18 Main Street Lithgow**  
02 6353 1897  
[lawsenco@vic.chariot.net.au](mailto:lawsenco@vic.chariot.net.au)  
Membership fees average out to about \$9 per movie

**New Release - Anonymous**  
**Friday February 2, 10.30am and 7.30pm**  
**Sunday February 4, 1.30pm**  
Rated M. Was Shakespeare a fraud?

**Sunday Afternoon Film Concert**  
**Sunday February 26, 1.30pm**  
*See [lisiting under live music and performance](#).*

**Lithgow Valley Film Society Patron's Special: The Chifley's of Busby Street**  
**Friday February 17, 10.30am and 7.30pm**  
Join Film Society patron Andrew Pike, OAM for a special screening of this doco he wrote and directed.

**Patron's Special: Across the Plateau**  
**Friday February 17, 1.30pm**  
Film Society patron Andrew Pike, OAM screens 'Across the Plateau'. The true story of mainly over 60s Chinese who have health problems and decide to embark on a bike journey of over 3,000kms from the Industrial city of Lanzhou in north-west China to the Everest Base Camp.

### LITHGOW REGION

**Crystal Theatre Community Cinema**  
Wolgan St Portland  
Films \$6  
Food and drinks sold in cinema snack bar

**New Year's Eve**  
**Friday February 10, 8pm**  
Staring Jessica Biel, Michelle Pfeiffer, Zac Effron. PG 13.

**Puss in Boots**  
**Gindaay Youth Matinee, Saturday February 11, 2pm**  
Rated PG. Animation.

### ORANGE



**Flix in the Stix**  
**Saturday February 4**  
Flix combines the screening of its collection of award winning short films with music from the highly acclaimed Australian singer songwriter, James Reyne performing live. Also featuring special guest and much celebrated Australian bush poet, Murray Hartin. Pack a picnic. Tickets through Moshtix and Boomers Bookshop orange Orange Botanic Gardens Hill St Orange Orange  
[www.flixinthestix.com.au](http://www.flixinthestix.com.au)  
[www.facebook.com/flixinthestix](http://www.facebook.com/flixinthestix)

### PARKES

**Little Theatre**  
**Bogan Street, Parkes**  
(Parkes Film Society)

**Film Society AGM**  
**Friday February 24**  
[www.parkesfilmsociety.com](http://www.parkesfilmsociety.com)

## Heritage

### CABONNE

**Banjo Paterson's Birthday Bash**  
**February 17**  
Celebrating the Birthday of Banjo Paterson born Orange in 1864 and spent year years at the family Station Buckinbah Yeoval. Picnic style lunch, poetry reading, photo display and a walk over the new creek crossings to the Ruins of the original Paterson Homestead. In conjunction with the Orange Historical Society.  
Yeoval

## Art Tours

**Art Tour to Canberra**  
**Tuesday 7 & Wednesday 8 February**  
Two day tour to see Renaissance Exhibition at the National Gallery of Australia. Includes cruise on Lake Burley Griffin, visit to Canberra Glassworks, viewing Handwritten: Ten Centuries Of Manuscript exhibition at the National Library's new Exhibition Gallery. Viewing the Indigenous Galleries at the NGA, the New Australian Garden & Skyspace Installation \$340 FORG Members, \$355 Non-Members. Includes: travel, entry fees, accommodation, cruce, breakfast and dinner.  
Bookings: 6393 8136

**Renaissance: One Day Tour**  
**Tuesday 14 February**  
Orange Regional Gallery Tour to RENAISSANCE at the National Gallery of Australia  
\$85 FORG Members,  
\$95 Non-members  
Bookings: 6393 8136

# What's On | February 2012

A selection of new events from the Central West NSW regional cultural calendar  
Also look at events around the region at: [www.artsoutwest.org.au/whats\\_on/](http://www.artsoutwest.org.au/whats_on/)

## Literary

### BATHURST REGION

**PlayWriting Group**  
Bi-monthly, third Monday,  
5.30pm. November, February,  
April, June, September  
Local Stages-Performing Arts  
Development Program.  
We get together monthly and  
share ideas and words, we read  
for each other, brainstorm ideas,  
share experiences. Casual and  
fun.  
Bathurst Memorial Entertainment  
Centre, William St Bathurst  
Kylie 0416 250 269

### ORANGE

**Orange City Library**  
Civic Sq, Byng Street Orange  
02 6393 8132

**Cecile Yazbek launches  
Mezze to Milk Tart**  
Friday 24 February, 11am  
Cecile Yazbek launches Mezze  
to Milk Tart: From the Middle  
East to Africa in my vegetarian  
kitchen. Free.  
Bookings essential 6393 8132

**Central West Writers  
Centre Drop-In Days**  
last Friday of the month,  
2.30pm to 4.30pm  
Central West Writers' Centre,  
upstairs at Orange City Library.  
6393 8125.

**The Recipe Club**  
Last Friday of month, 12.30pm  
Starts February 24  
People interested in sharing  
recipes, cookbooks and talking  
about food are most welcome.  
The Recipe Club is being  
offered by all Central West  
Libraries branches. To get  
involved, please contact your  
local library. Free.

## Workshops

### COWRA, WEELINGTON

**ABC OPEN Facebook 101:  
Introduction to the social  
network**  
Wellington: Saturday February  
4, 9.30-12.30  
Cowra: Monday February 6,  
10am-1pm  
How to get started on Facebook.  
How to use it to interact with the  
ABC. How community groups  
and organisations can use the  
platform to their benefit.  
Social media etiquette and the  
pros and cons of using Facebook.  
Bring along your questions.  
Contact Luke to book your  
attendance at this workshop.  
Free. 02 6393 2542  
Wellington Library  
Cowra Library  
abcopen.centralwest.nsw@abc.  
net.au

### ORANGE

**Getting Published:  
An ASA Seminar**  
Friday 17 February, 6-8pm  
You've finished the manuscript  
but what now? How do you know  
to whom to send your material,  
and how long you have to wait?  
How do you negotiate a contract  
or find an agent who may be  
able to help? Set yourself up as  
a professional who is capable of  
representing your own interests  
with knowledge and confidence.  
This two-hour session presents  
the basics for authors and  
illustrators.  
Bookings essential - book online  
at [www.asauthors.org](http://www.asauthors.org) or call  
1800 257 121 or 02 9211 1004  
Enquiries call the Central West  
Writers' Centre on 6393 8125  
SA members: \$15 Partners: \$15  
Non-members: \$15.  
West Room,  
Orange Regional Gallery  
Byng Street Orange

### WEB TIP:

Find more workshops, classes  
and other training on the Arts  
OutWest website:  
[artsoutwest.org.au/training.php](http://artsoutwest.org.au/training.php)

### PARKES



**Free Acting Master Class  
with Ana Maria Belo**  
Friday February 3, 10am-1pm  
As part of this tour Critical Stages  
will also hold a FREE Acting  
Master Class with Ana Maria  
Belo. Develop skills in bringing  
your characters from the page to  
the stage. Respond and analyse  
scripts and how to convey your  
character's story. Prepare to act  
with ease and confidence.  
For ages 16+  
Followed by the Community  
Theatre Presenters Forum (2-  
4pm) FREE. Please book.  
Little Theatre  
Bogan Street Parkes  
michael@criticalstages.com.au  
02 9331 3107

### WELLINGTON

**Life & Your PHENOMENAL  
Creative Practice**  
Saturday February 25 &  
Sunday February 26,  
10am - 6pm  
A transformational two-day  
workshop; a rich, guided  
conversation about where you're  
at now, how to identify where you  
want to go, and finding rewarding,  
sustainable and deeply creative  
ways to get there.  
\$395 includes two full days  
tuition, light lunch and  
refreshments served throughout  
both days, all course materials  
(including full course notes and  
curriculum)  
Enrol at:  
[http://thepublicstudio.net/  
lypcpfeb12](http://thepublicstudio.net/lypcpfeb12)  
Enquires [hello@thepublicstudio.  
net](mailto:hello@thepublicstudio.net) or [phoebe@cicerodesign.  
com.au](mailto:phoebe@cicerodesign.com.au) Macquarie Theatre  
36-42 Swift Street, Wellington

## Meetings

### BATHURST

**Bathurst Art Group  
Meets 4th Wednesday of each  
month, 7.30pm**  
All visual arts enthusiasts  
welcome for informal art  
discussions over a drink.  
Discuss anything arty from  
exhibitions to existentialism  
Cathie Hale [art@catherinehale.  
com.au](mailto:art@catherinehale.com.au) or 0488 960 912  
Upstairs, The Oxford  
William Street Bathurst

**VisCopy Copyright  
Workshop for Aboriginal  
Artists**  
Friday February 24  
FREE  
Bookings and details  
Arts OutWest 6338 4657

### FORBES

**Forbes Camera Club**  
3rd Thursday of month, 7.30pm  
\$5 meeting plus \$30 annual  
membership to Forbes Arts  
Society  
CWA Hall Forbes

**Forbes Town Band AGM**  
Monday February 20, 7pm  
Forbes Town Band Hall

### PARKES

**Community Theatre  
Presenter Forum**  
Friday February 3, 2-4pm  
Would you like more touring  
theatre in your town? Would you  
like more support for the theatre  
culture in your area?  
Critical Stages NSW would  
like to invite you to participate  
in the Community Presenter  
Forum. An opportunity to discuss  
independent theatre touring  
regional NSW through Critical  
Stages.  
With your help we would like to  
start an open discussion about the  
theatre culture in your local area,  
how we can build your audiences  
and what you would like to see  
come to your communities.  
Little Theatre  
Bogan Street Parkes  
02 9331 3107  
[michael@criticalstages.com.au](mailto:michael@criticalstages.com.au)

More grants and funding resources and lots of other opportunities for those in the arts can be found in the latest 'Opportunities in the arts' at: [www.artsoutwest.org.au/resources/arts\\_opportunities.php](http://www.artsoutwest.org.au/resources/arts_opportunities.php)

## Funding



### REGIONAL ARTS NSW

#### Country Arts Support Program (CASP)

This is the annual small grants program devolved to RANSW by the NSW Government through Arts NSW.

CASP provides small grants up to \$3,000 (but usually about \$1500) to arts and community organisations in regional NSW for short term, locally initiated projects.

You can apply for things like artists fees and expenses for workshops, arts activities as part of a community festival or event, artists-in residence programs, public art and design projects, professional performances, arts and cultural directories, community seminars and forums, arts camps and curators for exhibitions.

Only groups who are based in regional NSW can apply to this fund. The types of groups include non-profit arts and community organisations, local government bodies and P&C associations. Applications must be for an arts or cultural project that benefits your community.

It is a criteria of application that all applicants MUST discuss their project with their Regional Art Board (in this region, Arts OutWest) prior to submitting an application.

Details at: [www.regionalartsnsw.com.au/grants/casp.html](http://www.regionalartsnsw.com.au/grants/casp.html)

For 2012 you can choose to submit your application by email using the online application form.

See examples of past funded projects in this area at: [www.artsoutwest.org.au/funding/CASP.php](http://www.artsoutwest.org.au/funding/CASP.php)

**Applications close on 10 February 2012 for projects taking place after 9 April 2012.**

### AUSTRALIA COUNCIL FOR THE ARTS

[www.australiacouncil.gov.au/grants](http://www.australiacouncil.gov.au/grants)  
1800 226 912

A selection of upcoming funding rounds:

#### ARTSTART

\$10,000. Assistance to recent creative arts graduates to help them establish an arts career.

**Closes March 2, 2012**

#### The Kirk Robson Awards

Recognises leadership among young community arts and culture practitioners.

**Closes March 2, 2012**

#### Ros Bower Award

\$50,000. Honours an artsworker or artist with a proven record of high achievement in the field of community cultural development.

**Closes March 2, 2012**

#### Community Partnerships | Projects with public outcomes

\$20,000 - \$30,000. Funding for one-off community arts and cultural development projects that must have a public outcome and involve collaborations with a range of cross-sectoral partners.

**Closes March 2, 2012**

#### Community Partnerships | professional development

Funding for individual artists and arts workers to build their professional capacity as community arts and cultural development workers.

**Closes March 2, 2012**

#### Community Partnerships | projects

**Closes March 2, 2012**

#### Music |Nashville Songwriter Residency

\$15,000. Supports a three-month songwriter residency in Nashville.

**Closes March 12, 2012**

Details of more Australia Council for the Arts grants online at:

[www.australiacouncil.gov.au/grants](http://www.australiacouncil.gov.au/grants)

### DEPARTMENT OF THE PRIME MINISTER AND CABINET, OFFICE FOR THE ARTS Festivals Australia

Funds Australian regional and community festivals to present quality cultural projects. See: [www.arts.gov.au/arts/festivals\\_australia](http://www.arts.gov.au/arts/festivals_australia)

**Closing 10 February 2012 (for projects commencing after 1 July)**

### NATIONAL ASSOCIATION FOR VISUAL ARTISTS (NAVA)

#### NSW Artists' Grant

Amount: up to \$1,250 (indiv.), up to \$2,500 (groups). Assists professional visual arts, craft and design practitioners in NSW to effectively produce, present and promote their work throughout NSW, interstate and overseas. See: <http://www.visualarts.net.au/grants/nsw-artists-grant>

**Closes February 15, 2012**

#### Australian Artists' Grant (previously Janet Holmes à Court Artists' Grant)

Amount: \$500 for individuals, \$1,000 for groups. Provides financial assistance to professional artists for the public presentation of their work. See: [www.visualarts.net.au/grants/australian-artists-grant](http://www.visualarts.net.au/grants/australian-artists-grant)

**Closes February 15, 2012**

### THE FOUNDATION FOR RURAL AND REGIONAL RENEWAL

#### Small Grants for Small Rural Communities

Supports community development involving youth; resettlement of immigrants in rural Australia; community infrastructure; and community hardship in drought affected areas. Up to \$5000. See:

[www.frrr.org.au/cb\\_pages/general\\_grants.php](http://www.frrr.org.au/cb_pages/general_grants.php)

**Closes March 31, 2012**

#### WEB TIP:

This page includes just highlights of funding opportunities in open now.

All these grants funding resources plus many more can be found in the Regional Arts NSW e-bulletin at:

[www.regionalartsnsw.com.au/ebulletin/e-bulletin.html](http://www.regionalartsnsw.com.au/ebulletin/e-bulletin.html)

and on the Regional Arts NSW website at:

[www.regionalartsnsw.com.au/grants/calendar/calendar.html](http://www.regionalartsnsw.com.au/grants/calendar/calendar.html)

# Opportunities

More grants and funding resources and lots of other opportunities for those in the arts can be found in the latest 'Opportunities in the arts' at: [www.artsoutwest.org.au/resources/arts\\_opportunities.php](http://www.artsoutwest.org.au/resources/arts_opportunities.php)

## Calls for Artwork

**2012 Calleen Art Award & Central West Art Award**  
**Exhibition dates: Sunday 22 April to Saturday 2 June 2012**  
**The Cowra Regional Art Gallery.**

**2012 Calleen Art Award**  
The Calleen Art Award is a nationally recognised annual acquisitive painting award valued at \$16,000 in 2012. Entry is open to artists over 18 years, living and working in Australia. Entries must be an original artwork in any painting medium including oils, acrylic or watercolour.

**2012 Central West Regional Artists Award**  
The Central West Regional Artists Award was established in 2009 by the Cowra Regional Art Gallery with the generous support of a private donor. The award is non-acquisitive and the winner will receive \$2,000 and the opportunity of an exhibition at the Cowra Regional Art Gallery during 2013/2014. Entry is open to artists over 18 years, living and working in Central West NSW as defined by the local government areas of Bathurst, Blayney, Cabonne, Cowra, Forbes, Lachlan, Lithgow, Mudgee/ Gulgong (Mid Western Region), Oberon, Orange, Parkes, Weddin and Wellington. Entries must be an original work in i) any painting medium including oils, acrylic and watercolour or ii) any drawing medium on paper.

Note: Artists living in Central West NSW (as defined above) may enter the same artwork into both Awards if the entered artwork is in any painting medium (see the entry form for more details).

Entry forms are available by contacting the Cowra Regional Art Gallery on 02 6340 2190 Entry fee \$33 (one entry) \$66 (two) \$99 (three)  
[cowraartgallery.com.au/awards.html](http://cowraartgallery.com.au/awards.html)

### **Cowra Recycled Art Competition 2012**

The Cowra Tidy Towns and Urban Landcare Committee have announced that the next Recycled Art for Cowra Award (RAFCA) competition will take place in May 2012 at Cowra Aquatic Centre with the theme of Aussie Bush. Further information and entry forms will be available shortly, allowing everyone plenty of time to work on their exhibits.  
[www.cowra.nsw.gov.au](http://www.cowra.nsw.gov.au)  
**Entries to be delivered between 9 and 11 May, 2012**

**10th Painting Group Exhibition**  
The annual Parkes Painting Group painting exhibition will be held April 27-29, 2012. Contact Helen Huntly [phuntly6@bigpond.com](mailto:phuntly6@bigpond.com)

**Peak Hill Country Crafts Award for Landscape Art**  
\$800 prize money. Traditional & Contemporary Sections. Schedule & entry forms available from 02 6869 1981 or email [dorothylincoln@bigpond.com](mailto:dorothylincoln@bigpond.com)  
Peak Hill Country Crafts  
Opposite post office Peak Hill  
**For exhibition opening March 31, 2012**

**Tullamore Art Prize**  
This Easter, Tullamore Irish Festival is holding the inaugural TULLAMORE ART PRIZE & EXHIBITION from Thursday 5 April to Sunday 8 April, 2012. Featuring all paint mediums, drawing; including charcoal, & sculpture. First prize of \$1000 & category prizes of \$250. A maximum of three artworks are requested per artist. All artworks will be available for purchase by the public throughout the exhibition. There will also be a guide book produced with a short artist biography as well as a description of each artwork, supplied by the artist.  
02 6892 5527  
[moiracrowleys@optusnet.com.au](mailto:moiracrowleys@optusnet.com.au)

**Artwork(s) arrive at the exhibition on or before Wednesday, 3 April 2012**

**Smalls 2012**  
**Opening night 7 April, 2012**  
**River Bank Gallery,**  
**71 Gaskill Street Canowindra**  
People's Choice Prize: \$500. First Prize. Open to all artists. Theme of this exhibition is not limited by subject but the works must be completed on the required canvas. This generates an amazing diversity, drawing attention to the unique way in which each artist approaches and executes their work. Placed together these works create something very special because of the canvas size. All canvases for the '2012 Smalls' must be purchased from the River Bank Gallery. This is a condition of entry to the exhibition. The number of entries per artist is limited to 6. Three dimensional works need to be approximate in scale to 10X10X10 inches.  
Entry forms at: [www.riverbankgallery.com](http://www.riverbankgallery.com)  
02 6344 2778  
**Entry form and artworks due 4 April, 2012**



### **Waste to Art competitions**

The annual Waste to Art competition challenges that thinking and gives an opportunity to showcase artistic ability. Celebrating the re-use and recycling of waste materials, the competition challenges people to use their imagination to turn their trash into art and craft treasures.

The five categories are primary school, high school, community, building/ sculpture and open. Professional artists are eligible to enter the open category. Each competition is restricted to people living in that particular council area. Contact your local, participating council for an entry form.

The Regional Exhibition will be held in Forbes this year with the opening scheduled for June 2012.

General information  
[/www.netwaste.org.au/projects/wasteToArt.htm](http://www.netwaste.org.au/projects/wasteToArt.htm)

**Wellington - Artwork due March 8, 2012**

**Oberon - Artwork due March 24, 2012**

**Forbes - Artwork due March 28, 2012**

**Cabonne - Artwork due April 5, 2012**

**Weddin - Artwork due 11am Thursday April 26, 2012**

*IMAGE: 'Just Hangin' Waiting for a breeze' by Helen Standen, Parkes. Previous Waste to Art entry.*

### **WEB TIP**

Lots more in Opportunities in the Arts at: [www.artsoutwest.org.au/resources/](http://www.artsoutwest.org.au/resources/)

More grants and funding resources and lots of other opportunities for those in the arts can be found in the latest 'Opportunities in the arts' at: [www.artsoutwest.org.au/resources/arts\\_opportunities.php](http://www.artsoutwest.org.au/resources/arts_opportunities.php)

## Competitions

### Grenfell Henry Lawson Festival Verse and Short Story Competitions

Total prize money of \$3850 plus statuettes. Medallions will also be awarded in primary sections.

There are 6 classes for verse, some with Australian themes and 4 classes in short story, all with any theme. Short stories are limited to 2000 words and verse to 48 lines.

Entry forms and conditions from [www.grenfell.org.au/henrylawsonfestival](http://www.grenfell.org.au/henrylawsonfestival) or by writing to: The Verse and Short Story Coordinator, PO Box 77 Grenfell NSW 2810

Contact Mary Moffitt 02 6343 1575.

**The competition closes on 30 March 2012. Entries must be post marked by this date.**

## Opportunities

### Museums & Galleries NSW Seeking Touring Exhibitions for 2012 Exhibitions Register

The Exhibitions Register is an electronic publication promoting touring exhibitions available to the museum and galleries sector in NSW and across Australia, connecting travelling exhibitions with potential host venues. The Register is published twice a year and submissions are accepted from public galleries, museums, curators, artists and artist-run initiatives. Seize this opportunity to promote your touring exhibition for free!

Download a submission form here: [http://mgnsw.org.au/publications/exhibitions\\_register/](http://mgnsw.org.au/publications/exhibitions_register/)

Issue 1 will be published: on the M&G NSW website on 29 February, 2012

For further information: please contact Jasmin Dessmann on (02) 9339 9906 or [jasmind@mgnsw.org.au](mailto:jasmind@mgnsw.org.au)

**Submission deadline: Friday, 17 February, 2012 at 5pm.**

## Opportunities

### Calling sculptors

Those interested in doing sculpture and those interested in working with a great group of people towards an exhibition at Orange Gallery in 2012

The Rogues sculpture group is exhibiting at the end of next year at Orange Gallery. If you are interested in being part of this dynamic and exciting exhibition please come to a meeting at Orange Gallery on Saturday January 21st at 10.30. If you are interesting in being part of this but can't come to the meeting, please contact Karin Smith on 0431 821615 or Carol Endean Little on 0400422979. Please note, to be part of the exhibition you need to become a member of Rogues.

### Short + Sweet Play Festival: Seeking regional partners

'The biggest little play festival in the world' has launched a program to set up rural hubs of writers, directors and actors to create and perform local plays for local audiences... with the potential for them be shared with all Australia. Short+Sweet is seeking passionate and dynamic partners to help deliver this exciting initiative across regional and rural NSW and calls on interested companies and organisations to submit an Expression of Interest (EOI) by 14 February 2012.

Success will depend on a number of factors including location, skills, resources and commitment.

Organisations will need to make a successful case as a potential Short+Sweet partner and demonstrate delivery of innovative programs with success and passion.

Application criteria:

1. Best Case Scenario: Make a convincing case outlining how your organisation fits with Short+Sweet based on achievements and aspirations.
2. People and Partners: Short biographical information about your key people and partner organisations.
3. Success Story: What is the key to your successful delivery of programs? How do you measure this?

4. Sustainability: Demonstrate that your organisation is financially sound and sustainable by providing latest audited accounts or financial statements.

Contact Michelle Hall on [michelle@shortandsweet.org](mailto:michelle@shortandsweet.org)

Visit [www.shortandsweet.org](http://www.shortandsweet.org)

**EOIs close February 14, 2012**

### Have your say on

#### Aboriginal policy

**Tuesday 7 February, 2pm – 5pm  
Dubbo RSL, Jacaranda Room  
Corner of Brisbane Street and  
Wingewarra Streets, Dubbo**

The Ministerial Taskforce on Aboriginal Affairs is seeking your views on the development of a new Aboriginal affairs strategy for NSW.

The new strategy will focus on the areas of service delivery and accountability, education and employment. The Ministerial Taskforce on Aboriginal Affairs encourages all interested parties to have their say on these issues.

In addition to attending the public community meeting, or if you are unable to attend, interested people and groups are encouraged to make a submission. For more information on the Ministerial Taskforce on Aboriginal Affairs and how to make a submission please visit [www.daa.nsw.gov.au/taskforce](http://www.daa.nsw.gov.au/taskforce) or call the Taskforce Secretariat on (02) 9219 0702. RSVP: The meeting will be catered. To register your attendance please email [taskforce@dhs.nsw.gov.au](mailto:taskforce@dhs.nsw.gov.au) or call 02 9219 0702.

This month in Opportunities in the Arts at:

**[www.artsoutwest.org.au/resources/](http://www.artsoutwest.org.au/resources/)**

- national visual arts competitions
- writing competitions
- opportunities for Indigenous artists
- fellowships and prizes
- history week and heritage awards
- an exciting opportunity for lighting designers
- artist residencies
- new resources for artist and cultural organisations
- positions vacant
- More funding opportunities

Would you like more touring theatre in your town?  
How can we support the theatre culture in your area?  
Critical Stages NSW and Arts OutWest invites you to a



## Theatre Presenter Forum

Friday February 3, 2-4pm

Little Theatre, Bogan Street Parkes

An opportunity to discuss independent theatre touring regional NSW through Critical Stages.

With your help we would like to start an open discussion about the theatre culture in your local area, how we can build your audiences and what you would like to see come to your communities.

For anyone interested in theatre: From communities of all sizes, from towns with and without theatre venues, for people from theatre groups, arts councils, progress and business associations, commercial venues or people just with a personal interest in seeing more great theatre and stage performances.

Plus bonus free Acting Master Class in the morning with Ana Maria Belo (for ages 16+)

Bookings: Michael at Critical Stages NSW

Phone 02 9331 3107

Email [michael@criticalstages.com.au](mailto:michael@criticalstages.com.au)

More about Critical Stages NSW at:

[www.criticalstages.com.au](http://www.criticalstages.com.au)

## Screen Central launch

screen  
central

Tuesday February 21, 5.30pm

The Hub, Keppel Street Bathurst

Calling all screen producers: from film makers to new media makers, camera operators to screen writers plus those who manage great film locations. Find out about the region's new screen services support organisation and how it can help you. A networking opportunity for the screen industry. FREE. RSVP to Kate Barker at CENTROC 02 6331 9246 / [kate.barker@centroc.com.au](mailto:kate.barker@centroc.com.au)  
More about Screen Central at: [screencentral.com.au](http://screencentral.com.au)

Add your details to the Screen Central directory:

Arts OutWest is coordinating the directory for Screen Central. Add your details at:

[www.artsoutwest.org.au/directory](http://www.artsoutwest.org.au/directory)

## Viscopy Copyright Workshop for Aboriginal Artists



Friday February 24

Bathurst

Important information for Aboriginal visual artists on issues of copyright, licensing your work, the new Resale Royalties Scheme and your rights as an artist. Viscopy is Australia and New Zealand's not-for-profit rights management organisation for the visual arts providing copyright licensing services.

FREE.

RSVP to Arts OutWest 6338 4657

[artsoutwest@csu.edu.au](mailto:artsoutwest@csu.edu.au)

More about Viscopy at: [www.viscopy.org.au](http://www.viscopy.org.au)

## Contribute to Artspeak

Contribute event listings, Central West arts news and photos to the March 2012 issue of Artspeak.

Share your arts news with the region and beyond. Email content to [artsoutwest@csu.edu.au](mailto:artsoutwest@csu.edu.au) by **February 15, 2012** Deadline for other arts media spots: at least 2 weeks in advance.

## Join us online

Take a look at the new [www.artsoutwest.org.au](http://www.artsoutwest.org.au) site for news, information and resources

Interact with Arts OutWest staff and follow latest news at:

Twitter: [www.twitter.com/artsoutwest](http://www.twitter.com/artsoutwest)

Facebook: [www.facebook.com/artsoutwest](http://www.facebook.com/artsoutwest)

or search for our 'Marramarra' or 'Young Consultants' facebook pages

### ARTS OUTWEST IS SUPPORTED BY:

Contributing local councils: Bathurst Regional, Blayney, Cabonne, Cowra, Forbes, Lachlan, Lithgow City, Oberon, Orange City, Parkes, Weddin and Wellington as well as Charles Sturt University.

Arts OutWest is supported by the NSW Government through Arts NSW



Arts OutWest is a member of Regional Arts NSW



REGIONAL ARTS  
NSW